

# ZBoard

## External Cladding Board

### 12mm Fibre Cement Board



A1 fire proof-  
ideal stove backer



External foundation  
cladding board



Heavy duty internal  
dry liner



Water resistant-  
ideal in wet areas

## A1 Fire Rated



## Water Resistant



## Cladding Ready



## High Strength



ZBoard fibre cement construction boards can be used in a wide range of applications both internally and externally, covering 4 key areas including fire protection, sound reduction, moisture resistance and cladding application.

A1 fire resistant board means that your structure will be safer in the event of a fire outbreak, potentially saving people's lives.

Makes ideal partition walling in damp or wet areas, such as bathrooms. It's also weather resistant, so can be exposed to poor weather on site during the construction phase without concern. A weather protective coating is required for permanent exposure.

Faster to fit than laying blocks, it's an ideal alternative to masonry substrates for domestic and commercial applications.

A stronger build means these boards can withstand surface impact, making the finish more durable and longer lasting, especially in high traffic areas prone to damage.

Made up of compacted cement with fibres, ZBoard 12mm Construction Board has exceptional strength properties. It also accepts wall mounted fixings without the need to secure to stud beams.

Boards are easily fixed to timber or metal stud work, and to solid walls using ZBoard fixing products.

Features	Benefits
100% recyclable	Easy to dispose of waste on site
High thermal mass	Capacity to store and release heat, according to surrounding
Non-combustible	Can be used as fire protection
Water resistant	Not effected when in contact with moisture
Heavy duty	Ideal for high traffic and vulnerable areas
Highly durable	Suitable for external and internal application





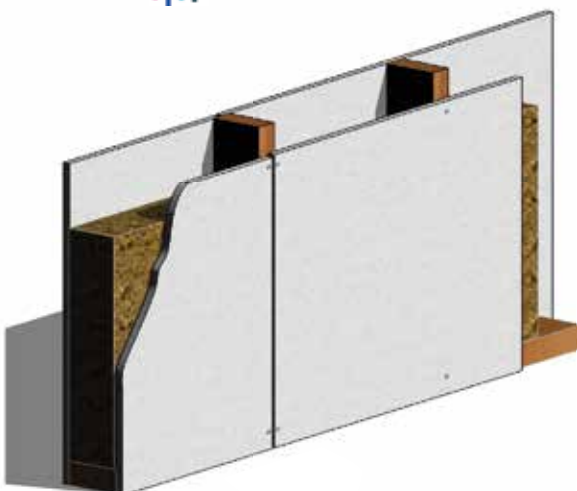
## Fire Protection

In a construction environment the STS fibre cement boards offer extensive fire protection, whether you are using as a high spec fire wall system for party walls or something simple like a backing board for a woodburning stove or boiler.

### Common Applications

- Internal party fire wall
- Roof space fire wall / spandrel panel
- Stove / boiler backer
- Oil tank surround
- Fire resistant ceiling board
- Timber cladding receiver

Internal stud wall - 113mm, 400mm centres  
118 minute fire resistance, sound insulation 42dB  
Wall weight 50kg per sqm



## Water Resistance

Ideal for floors and walls potentially exposed to moisture or requiring tiling. This could be anything from boarding out your basement, tiling your bathroom or using as an external cladding board. It's also weather resistant, so can be exposed to poor weather on site during the construction phase without concern. A weather protective coating is required for permanent exposure.

### Common Applications

- Basement liner membrane
- Tile backing board
- External rain shield cladding
- Weather board
- Wetroom boarding
- External render board



Board Dimensions		12mm
Board Dimensions & Weight	1200mm x 800mm 15.2 Kg 2400mm x 1200mm 45 Kg	
Tolerance	0.2%	
Test Standard	BS EN 12467:2016 + A1:2016	
Performance		
Density	1.28g/cm <sup>3</sup>	
Linear Variation (change in moisture)	0.16%	
Bending Strength (dry)	12.46 MPa	
Bending Strength (saturated in warm water)	12.91 MPa	
Water Impermeability (unprimed)	No water formation after 24 hours Damp patch covers tested area	
Water Impermeability (primed)	No water formation after 24 hours No damp patch in tested area after 192 hours	
Reaction to Fire	EuroClass A1 Non-Combustible (A1fl)	
Test Standard	EN ISO 1182 & EN ISO 1716	
Fire Insulation	BS 476 part 22:18 min burn time for timber frame party wall	
Mechanical Characteristics – Bending Strength (MOR)	Class 2	
Durability. Freeze-Thaw	Complied	
Durability. Heat-Rain	Passed	
Durability. Warm Water	Complied	
Durability. Soak-Dry	Complied	
Test Standard	BS EN 12467 : 2016 + A1 : 2016	
Pull through testing	Mean result: 1650 (Newtons)	
Pull out testing	Mean result: 840 (Newtons)	
Thermal conductivity	0.2435 W/M.k	
R Value	0.0493 M2K/w	
Durability/Min life Expected	30 Years	
Max Weight Per m2	100kg/m2	

## Compatible Cladding:

**ZClad**<sup>TM</sup>  
Natural Stone Cladding

**C**  
CENTURY  
STONE